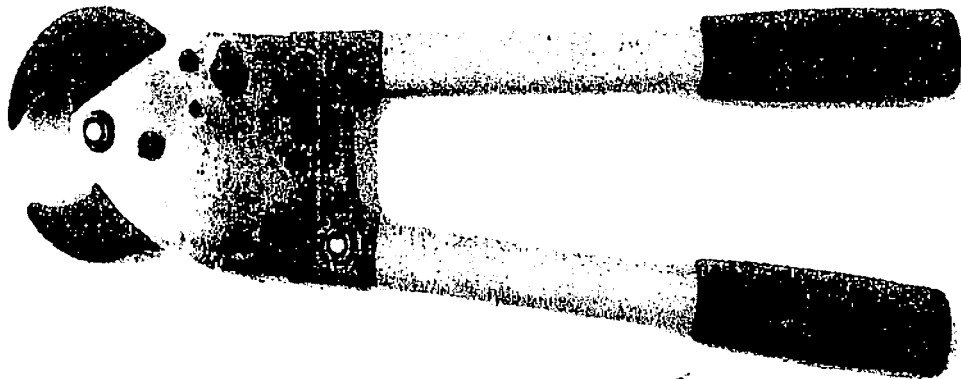


# H.K. Porter®

## SERVICE MANUAL FOR 6990FS, FSL, TS RATCHET CABLE CUTTERS



  
**COOPER** Tools

---

# SERVICE MANUAL FOR 6990FSL CABLE CUTTER DISASSEMBLY INSTRUCTIONS

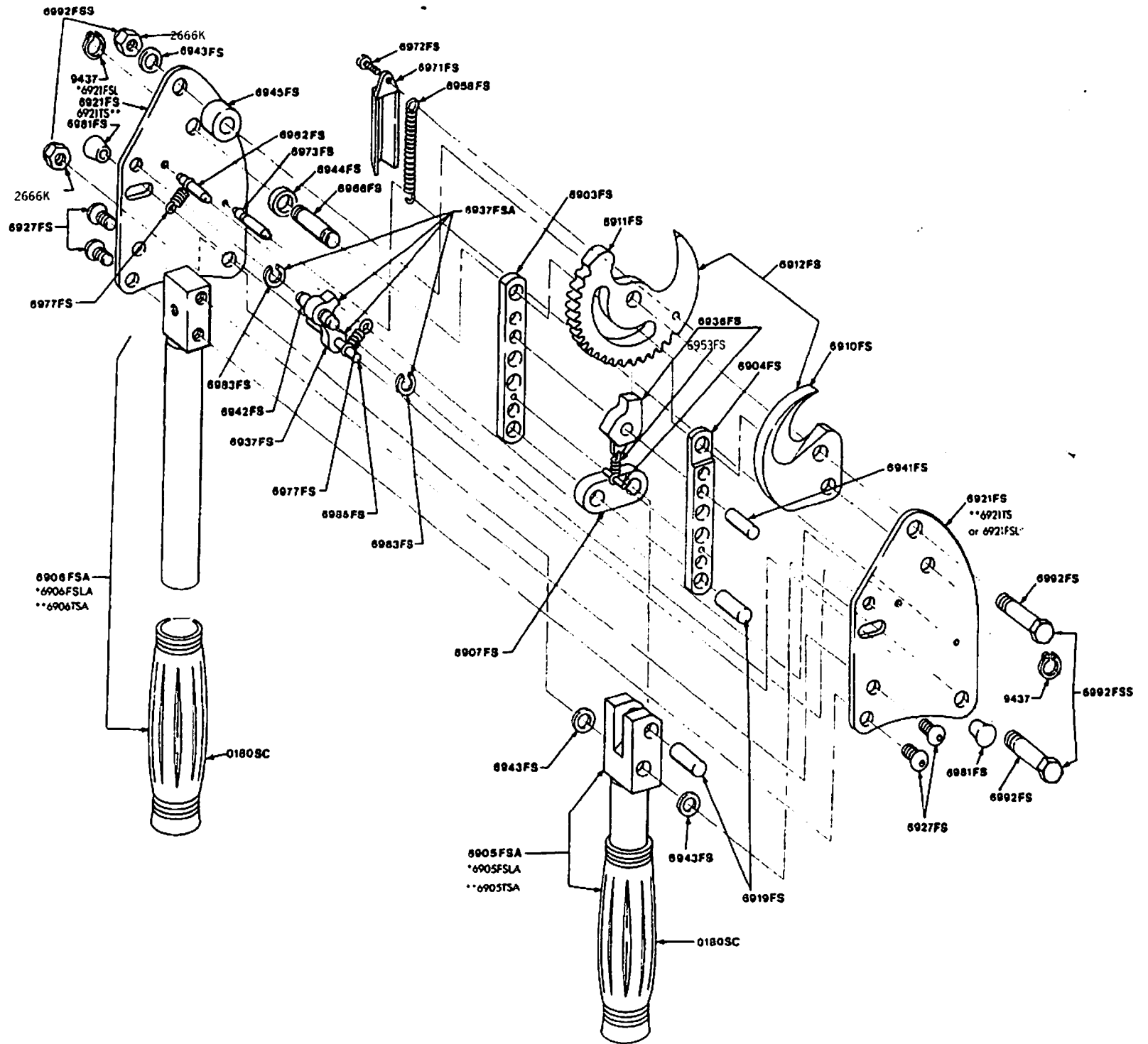
1. Place tool in vise (side of tool with 2666K nuts facing up) and pry both release knobs 6981FS from tool using a screwdriver.
2. Remove tru-arc ring 9437 from pivot pin 6966FS with tru-arc pliers.
3. Place a 9/16" wrench on the pivot bolt 6992FS (between tool and bench) and remove pivot bolt nut 2666K (with 9/16" wrench) and washer 6943FS.
4. Repeat step 3 on moving handle bolt 6992FS and nut 2666K.
5. Using an allen wrench remove the two fixed handle screws 6927FS.
6. Remove the top side plate 6921FS, 6921FSL, or 6921ITS carefully - exposing inside ratchet parts.
7. Lift off the spacers 6945FS and 6944FS.
8. Remove the spring assembly by loosening the screw 6972FS (assembly consists of 6972FS screw, 6971FS spring guard, 6958FS spring and 6973FS pin). Note: 6972FS must be heated before being removed.
9. Remove 6966FS pivot pin, 6992FS pivot bolt and blades 6910FS and 6911FS.
10. Remove moving handle bolt 6992FS.
11. Remove the two drive pivot pins 6919FS from the links (6904FS, 6903FS).
12. Remove the pivot pin 6941FS from the links freeing the pawl 6936FS from links.
13. Unhook the pawl 6936FS from the spring 6953FS.
14. Pull the links (6904FS, 6903FS) apart-freeing the pin 1487WM.
15. Remove the complete detent assembly (6962FS, 6977FS, 6937FS).
16. To disassemble detent assembly-remove 2 retaining rings 6983FS and separate pawl pin 6962FS from the detent 6937FS.
17. Remove fixed handle 6906FS, 6906FSLA, 6906TSA from side plate 6921FS, 6921FSL, 6921TS by removing 2 handle screws 6927FS.

## ASSEMBLY INSTRUCTIONS FOR 6990FS, 6990FSL, 6990TS CABLE CUTTER

1. Using 2 handle screws (6927FS, 6906TSA, 6906FSLA) loosely assemble fixed handle (6906FS) to one side plate (6921FS, 6921FSL, 6921TS). IMPORTANT-protruding end of set screw in handle stub should be facing toward inside of tool.
2. Install one tru-arc 9437 onto pivot pin (6966FS).
3. Install pivot bolt (6992FS) handle bolt (6992FS) and pivot pin (6966FS) through side plate (6921FS, 6921FSL, 6921TS). INSTALL THROUGH OUTSIDE OF PLATE FIRST.
4. Attach spring and guard assembly (6972FS, 6971FS and 6958FS) with screwdriver to outside of moving blade (6911FS). IMPORTANT-spring assembly must swivel freely-do not overtighten.
5. Install fixed blade (6910FS) over and onto pivot bolt (6992FS) and pivot pin (6966FS).
6. Assemble link spring (6953FS), pawl (6936FS) and two links (6903FS and 6904FS and pin 1487WM) together as per illustration #1.
7. Install pivot pin (6941FS) into link assembly.
8. Position link assembly and moving blade (6911FS) together as shown in illustration #2 and install over pivot bolt (6992FS) and pivot pin (6966FS) as shown.  
IMPORTANT-pawl (6936FS) must be placed in moving blade (6911FS) in such a way that it fits into second notch from edge of blade where spring assembly attaches.

SERVICE PARTS FOR 6990FS	
PART NO.	DESCRIPTION
6903FS	R.H. DRIVE LEVER
6904FS	L.H. DRIVE LEVER
6907FS	DRIVE LINK
6910FS	STATIONARY BLADE
6911FS	RATCHET BLADE
6919FS	DRIVE PIVOT PIN
6981FS	RELEASE KNOB
6921FS	SIDE PLATE
6927FS	HANDLE SCREW
6936FS	PAWL
6937FS	DETENT
6941FS	PIVOT PIN
6942FS	DETENT PIN
6944FS	SPACER
6945FS	SPACER
6958FS	SPRING
6962FS	STOP PIN
6966FS	PIVOT PIN
6971FS	SPRING GUARD
6972FS	SCREW
6973FS	SPRING PIN
6977FS	EXT. SPRING
6985FS	DETENT PIN
6992FS	PIVOT BOLT
6953FS	SPRING
2666K	NUT
9437	RET. RING
0180SC	GRIPS
6943FS	WASHER
6979FS	RING CLIP
6905FSA	R.H. HDLE. ASSY. W/GRIP
6906FSA	L.H. HDLE. ASSY.
6937FSA	DETENT ASSY.
6992FSS	PIVOT BOLT ASSY.
6912FS	PAIR BLADES
1487WM	CONNECTING PIN

\* FOR 6990 FSL IN PLACE OF LISTED NO.  
 \*\* FOR 6990 TS IN PLACE OF LISTED NO.



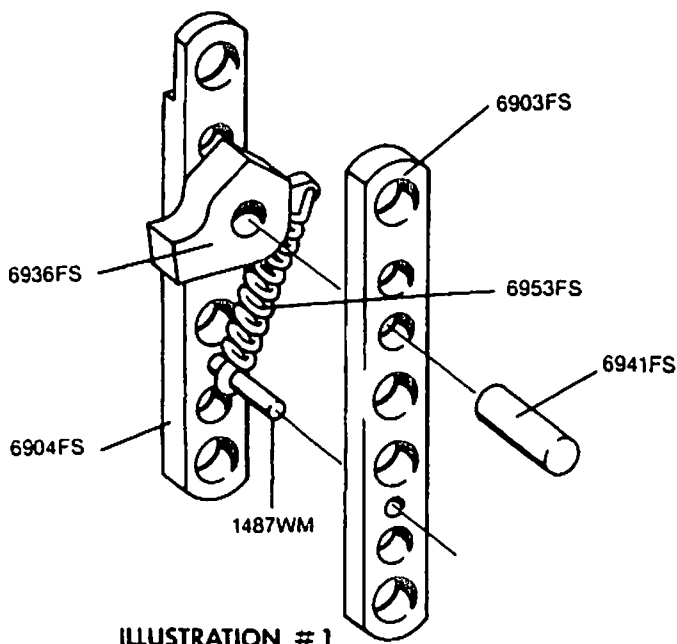


ILLUSTRATION # 1

9. Place pin (6973FS) through end of spring (6958FS) with spring groove at top and into hole in side plate (6921FS, 6921FSL, 6921TS).
10. Place drive link (6907FS and spacer 6944FS) under last hole of link assembly and install drive pivot pin (6919FS).

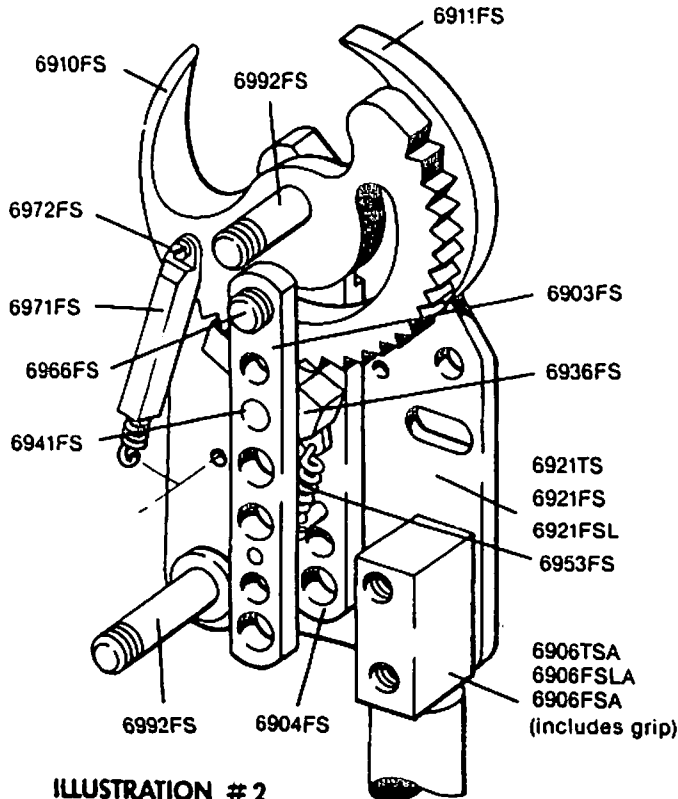


ILLUSTRATION # 2

11. Place moving handle (6905FSA, 6905FSLA, 6905TSA) onto handle bolt (6992FS) and install second drive pivot pin (6919FS) through drive link (6907FS) and handle clevis, (notched side of handle facing inward).
12. Place tool on bench so that elongated slot in side plate (6921FS, 6921FSL, 6921TS) overhangs edge of bench.
13. Insert detent assembly (6937FSA) into side plate (6921FS, 6921FSL, 6921TS) attaching two springs (6977FS) to detent assembly (6937FSA) one spring on each side of roll pin detent (6937FS).
14. Insert stop pin (6962FS) through other end of both springs (6977FS) and into hole on side plate (6921FS, 6921FSL, 6921TS).
15. Place spacer (6944FS) onto pivot pin (6966FS).
16. Place spacer (6945FS) onto blade pivot bolt (6992FS).
17. Install second side plate (6921FS, 6921FSL, 6921TS) by locating it over handle pivot bolt (6992FS), blade pivot bolt (6992FS) and pivot pin (6966FS). IMPORTANT-use screwdriver to locate three remaining pins into respective holes in sideplate (6921FS, 6921FSL, 6921TS).
18. Install washer (6943FS) over blade pivot bolt (6992FS) and install nut (2666K).
19. Repeat on moving handle (6905FSA, 6905FSLA, 6905TSA) and tighten until slight drag is felt (move handle back and forth).
20. Install two handle screws (6927FS) through sideplate into fixed handle (6906FSA, 6906FSLA, 6906TSA).
21. Adjust blade pivot bolt nut (2666K) in such a way that pivot bolt assembly, as a unit (6992FS) and (2666K) can be barely turned by hand.
22. Install tru-arc ring (9437) onto pivot pin (6966FS).
23. Install both release knobs (6981FS) onto tool by tapping gently with hammer.
24. Tighten four handle screws on fixed handle (6906FSA, 6906TSA, 6906FSLA).

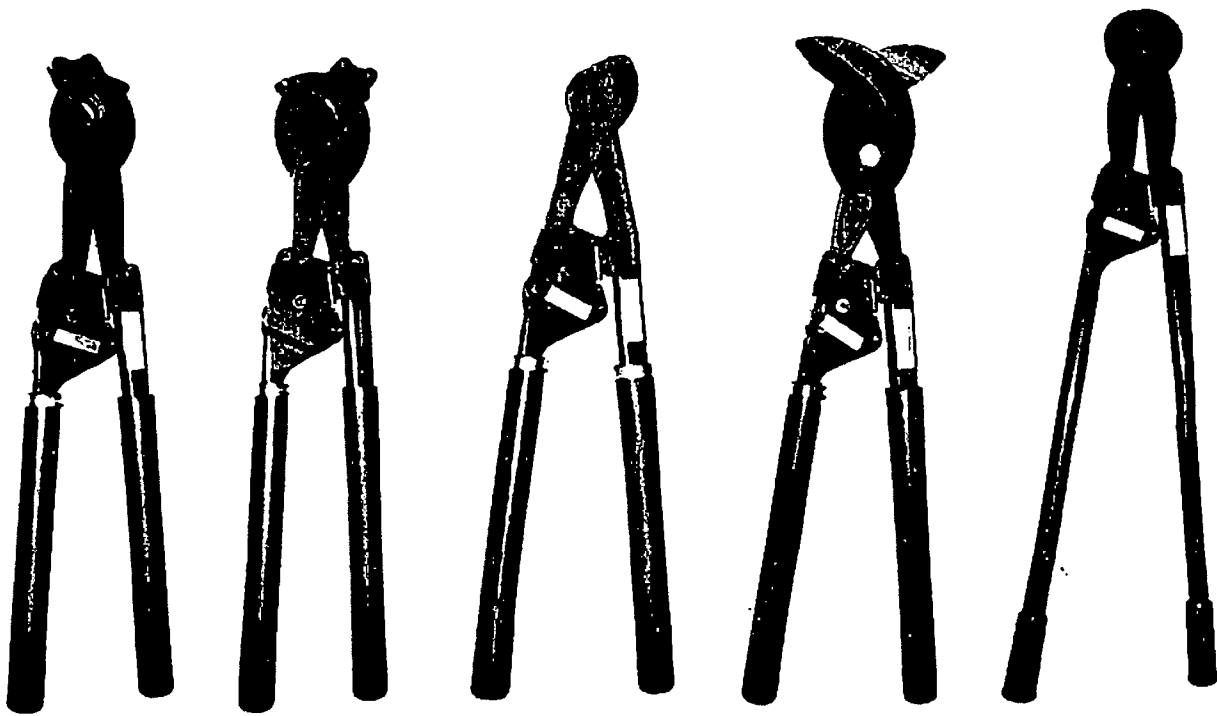
Lubricant: Use 3-In-One oil only.

**FOR REPAIR OR SERVICING,  
CONTACT YOUR H.K. PORTER  
AUTHORIZED SERVICE STATION  
OR CALL H.K. PORTER TOOL DIVISION  
SERVICE DEPARTMENT.**

In order to be of better service to you, CooperTools has installed special telephone numbers to put you in contact with customer service agents assigned to your market and region. We've divided the U.S. into four regions and have assigned special telephone numbers to them. They are as follows:

- A. (919) 362-7540 / NORTHEAST which comprises the following states: CT, DE, ME, MA, NH, NJ, NY, PA, RI, VT
- B. (919) 362-7541 / SOUTH which comprises the following states: AL, AR, D.C., FL, GA, MD, MS, MO, NC, SC, TN, VA
- C. (919) 362-7542 / MIDWEST which comprises the following states: IL, IN, IA, KY, MI, MN, ND, OH, WV, WI
- D. (919) 362-1709 / SOUTHWEST AND WEST which comprises the following states: AK, AZ, CA, CO, HI, ID, KS, LA, MT, NE, NV, NM, OK, OR, SD, TX, UT, WA, WY
- E. (919) 362-1670 / HARDWARE AND FARRIER PRODUCTS.

**FOR MORE INFORMATION ON OUR COMPLETE CUTTER LINE -  
CALL AND REQUEST OUR LATEST CATALOG**



**8690FH**

**8690FSK**

**8690CK**

**8690CS**

**8690TN**

Copyright 1992 Cooper Indus.